



FUTURE OF WORK:

Washington's *People & Businesses*

Nate Humphrey – Workforce Education Director

Monday, April 1, 2019



**COMMUNITY AND
TECHNICAL COLLEGES**

Washington State Board

SBCTC

Vision:

Build strong communities, individuals and families, and achieve greater global competitiveness and prosperity for the state and its economy by raising the knowledge and skill of the state's residents.

Mission:

We support and empower the Washington state community and technical colleges to increase higher education opportunities and student participation through advocacy, resources, information, leadership and accountability.

State Board's Mission Areas

- Basic Education for Adults
- Workforce Education
- Academic Transfer

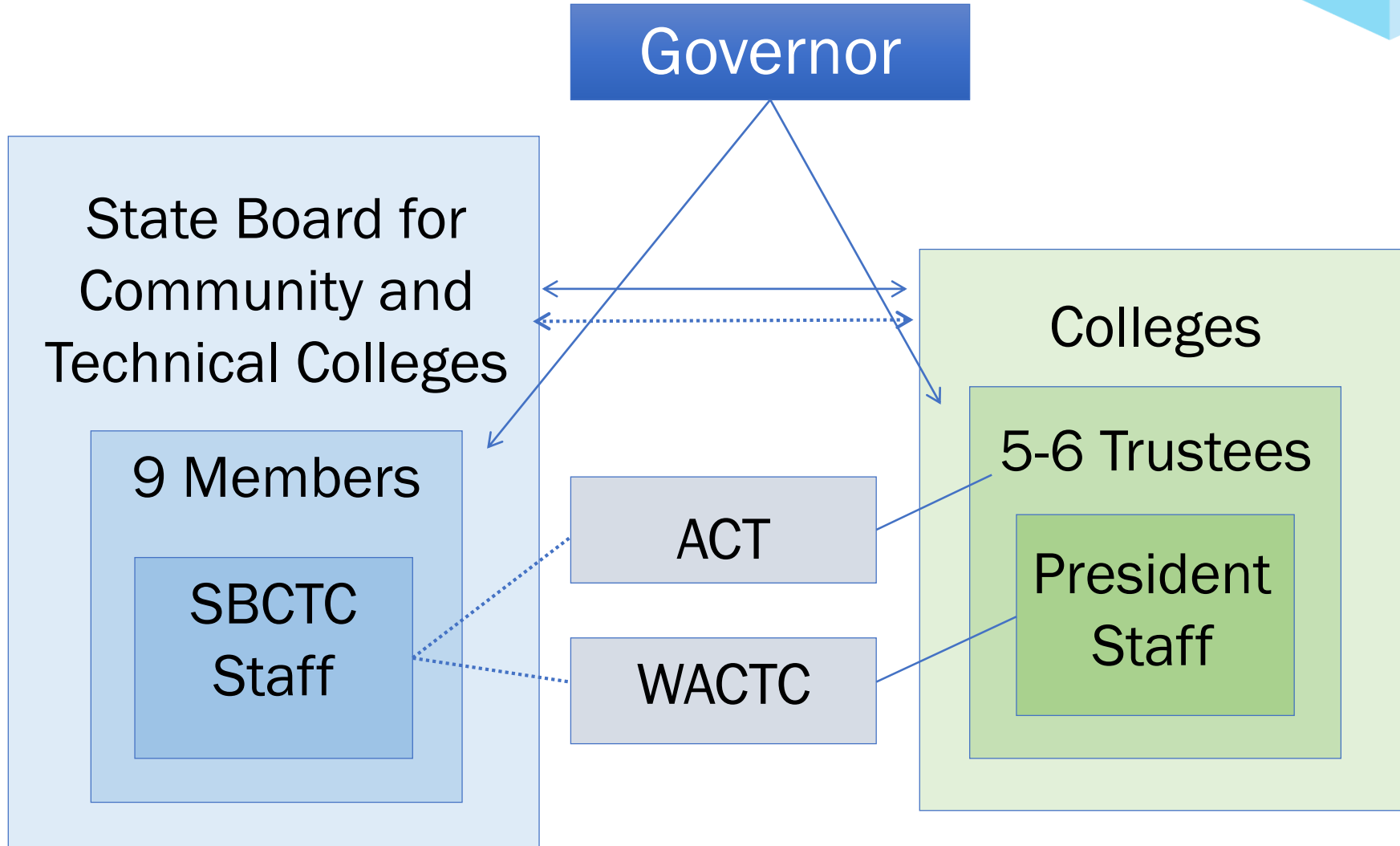
State Board's Strategic Priorities:

- ctcLink
- Advocacy
- Enrollments
- Equity & Diversity
- Completions
- Career Connect Washington

CTC GOVERNANCE STRUCTURE

- State Board for Community & Technical Colleges
 - Statewide Policy
 - Association of College Trustees
 - President's Association
 - State Board Staff
- CTC Local Board of Trustees
 - Local College Policy
 - Local Control & Autonomy
 - College President







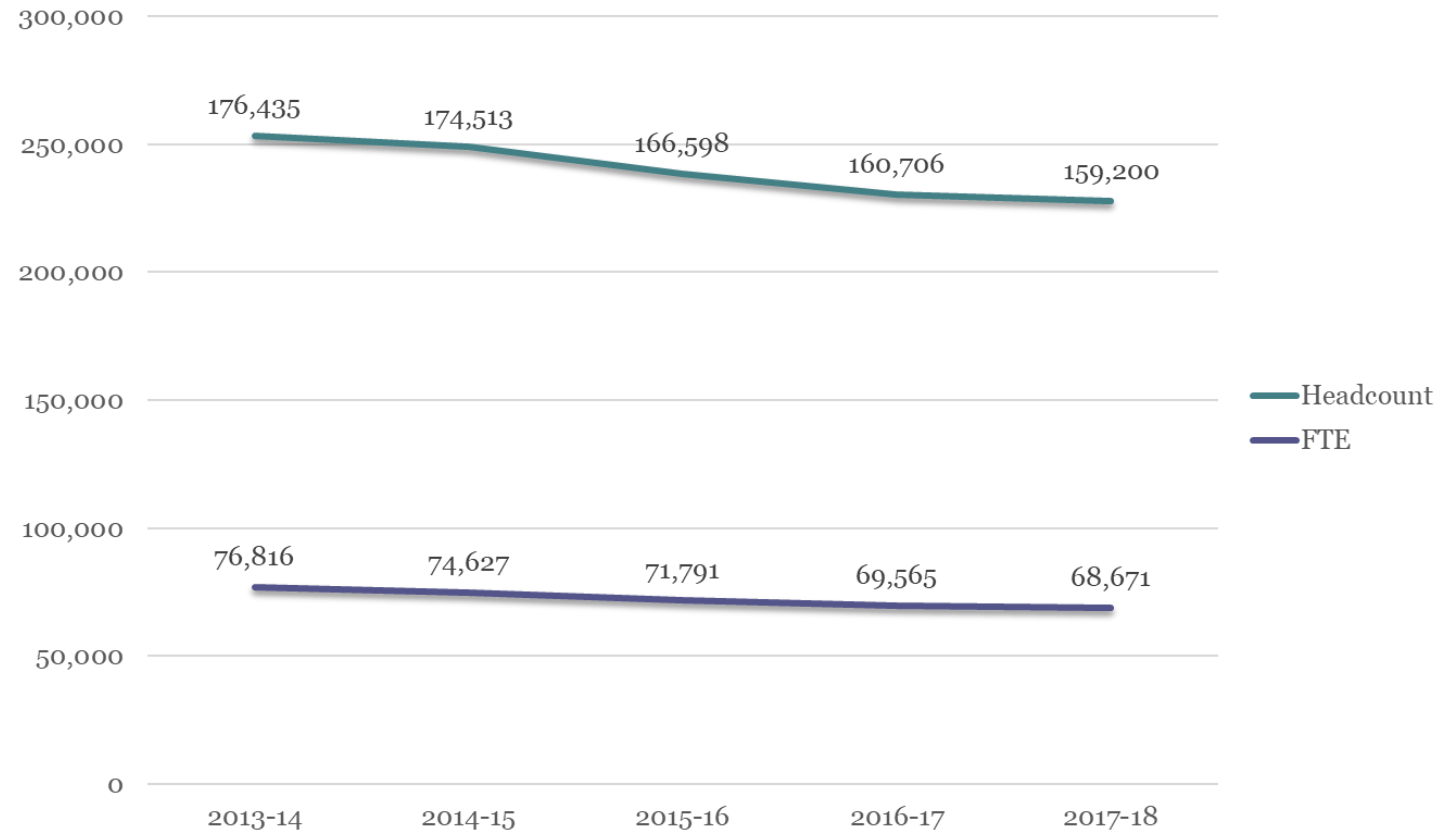


WORKFORCE EDUCATION PROGRAMS

- 46% of Student Enrollments
 - Largest Mission Area
- Applied Bachelor's – 3,960
- Apprenticeship – 13,255
- Corrections – 8,587
- I-BEST – 5,577
 - Integrated Basic Education Skills & Training
- Worker Retraining – 10,963



PROFESSIONAL/TECHNICAL ENROLLMENT TRENDS



CARL D. PERKINS – POST-SECONDARY

- Responsiveness to Business & Industry Shifts
 - Advanced Manufacturing
 - Composites/Automation – Mechatronics
 - Health Care
 - Nursing shortage response
 - Construction
 - Software into the jobsite/Facilities automation (IOT)
 - Transportation & Logistics
 - Unmanned Autonomous Systems (Drones)
 - Electronics
 - Intersection of Software & Machine - Robotics
 - Multidirectional career paths – health care to manufacturing
 - Information Technology & Cyber Security



PERKINS – FUTURE OF WORK

Recreating the changing work environment...



EXPANDED INCUMBENT WORKER TRAINING

Training in the work environment...

- Job Skills Program
 - New Employee, Retraining, Upgrade Training
 - Customized, short-term and job-specific training
- Hospital Education and Training Grant
 - Incumbent Healthcare Workers
- Early Achievers Grant
 - Incumbent Childcare Providers



CENTERS OF EXCELLENCE

- Agriculture & Natural Resources
- Allied Health
- Aerospace & Advanced Manufacturing
- Unmanned Autonomous Systems
- Clean Energy
- Construction



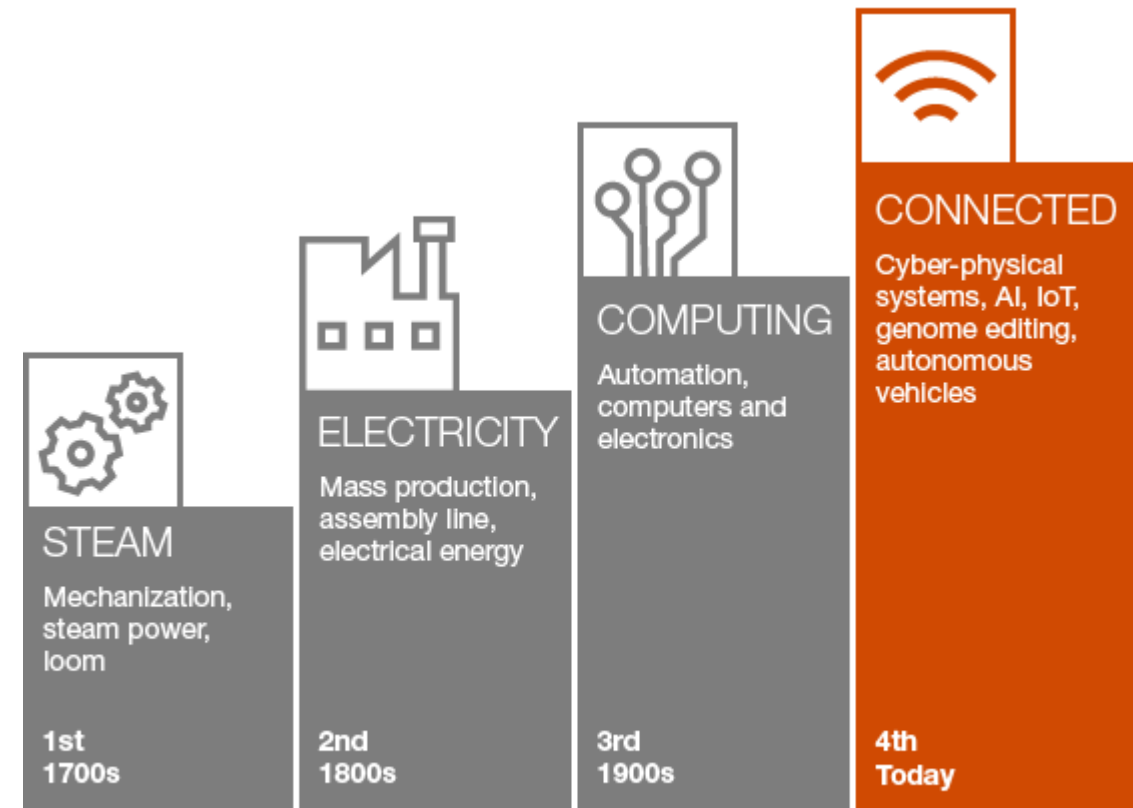
- Careers in Education
- Homeland Security Emergency Management
- Information & Computing Technology
- Global Trade & Supply Chain Management
- Marine Manufacturing & Technology

EXPANDED PARTNERSHIPS & TARGETED EFFORTS

- Adult Reengagement
 - Partnership with WSAC
- Basic Food, Employment & Training (BFET/SNAP)
 - Partnership with DSHS
- CTE Dual Credit
 - Partnership with OSPI
- I-BEST
 - Partnership between Prof/Tech & BEDA
- Veterans Industry Education
 - VIE-25
 - Partnership with Governor's Office & JBLM
- Worker Retraining
 - State Supported
- WorkFirst (TANF)
 - Partnership with DSHS

THOUGHTS FOR THE FUTURE

- We've been here before...
- Each of the last three industrial revolutions led to net job growth
 - 3D Printing, AI, Blockchain, Internet of Things (IOT)



INVESTING IN THE *PEOPLE* OF WASHINGTON

So if we've been here before...
how did we navigate before?

We invested in what remains
after one of these shifts...

Our People!

State Investments

- Community Colleges Act of 1967
- Community & Technical Colleges Act of 1991
- State Career & Technical Education Investments

Federal Investments

- Vocational Education Act of 1963
- 1968, 1976
 - Carl D Perkins Vocational & Technical Education Act
 - 1984, 1990, 1998, 2006, 2018
- Workforce Innovation & Opportunity Act