

The Monthly Employment Report

Washington 4.7%

United States 4.2%

Seasonally adjusted

November 2021



Employment Security Department
WASHINGTON STATE



For workers and businesses affected by COVID-19, Employment Security has updated information on the website at esd.wa.gov. For labor market information questions, please send your emails to data@esd.wa.gov.

Employment estimates in this report are generated by the U.S. Bureau of Labor Statistics (BLS). Monthly employment estimates are subject to revision in subsequent months when more sample data become available. BLS data in this report are rounded to the nearest 100.

On a seasonally adjusted basis, preliminary estimates from the federal Bureau of Labor Statistics (BLS) indicate nonfarm employment in Washington rose by 12,800 in November 2021.¹ BLS estimates the private sector gained 8,100 jobs during the month, and the public sector gained 4,700 jobs.

On a not seasonally adjusted basis, estimates for November 2020 through November 2021 indicate an increase in employment of 147,200 for the state. The private sector gained 127,100 jobs while the public sector gained an estimated 20,100 jobs over the year.

Washington's preliminary seasonally adjusted unemployment rate for November 2021 is 4.7 percent. The revised estimated October 2021 unemployment rate is at 5.0 percent. The November 2020 unemployment rate was 6.7 percent.

BLS estimates of monthly job gains and losses are based on a survey of businesses. Preliminary estimates are subject to revision. The October 2021 preliminary estimated gain of 6,300 jobs was revised to a loss of 500 jobs.

For more information, call Paul Turek at 360-706-3044.

Resident civilian labor force and unemployment, seasonally adjusted

The **resident civilian labor force** is the total number of people in the workforce, employed and unemployed, ages 16 and up.

The number of **unemployed** is the estimated number of people who currently do not have a job, are available for work and have actively looked for work in the last four weeks.

The **unemployment rate** is the ratio of the estimated number of unemployed divided by the civilian labor force.

Resident civilian labor force and unemployment, seasonally adjusted
United States and Washington state, October and November 2020 and 2021
Source: Employment Security Department/DATA; U.S. Bureau of Labor Statistics, Local Area Unemployment Statistics

	November 2021 (Preliminary)	October 2021 (Revised)	November 2020 (Revised)	October 2020 (Revised)
United States				
Unemployment rate	4.2%	4.6%	6.7%	6.9%
<i>Seasonally adjusted</i>				
Washington				
Unemployment rate	4.7%	5.0%	6.7%	7.0%
Resident labor force	3,936,700	3,935,000	3,843,000	3,981,800
Unemployed	184,600	198,100	256,500	277,800
Seattle/Bellevue/Everett				
Unemployment rate	4.4%	4.9%	6.2%	6.6%
Resident labor force	1,747,200	1,754,100	1,735,900	1,735,700
Unemployed	76,500	86,000	107,600	115,200

¹Most of the employment numbers discussed in this report refers to jobs, not people. For example, if a person holds two positions, these positions are counted as two jobs in the employment series. In the section titled "Unemployment," these positions refer to individuals, not jobs. In this case, a person holding two jobs is counted only once.

Unemployment, seasonally adjusted

The BLS estimates Washington's preliminary seasonally adjusted unemployment rate for November 2021 is 4.7 percent. The revised estimated October 2021 unemployment rate is 5.0 percent.

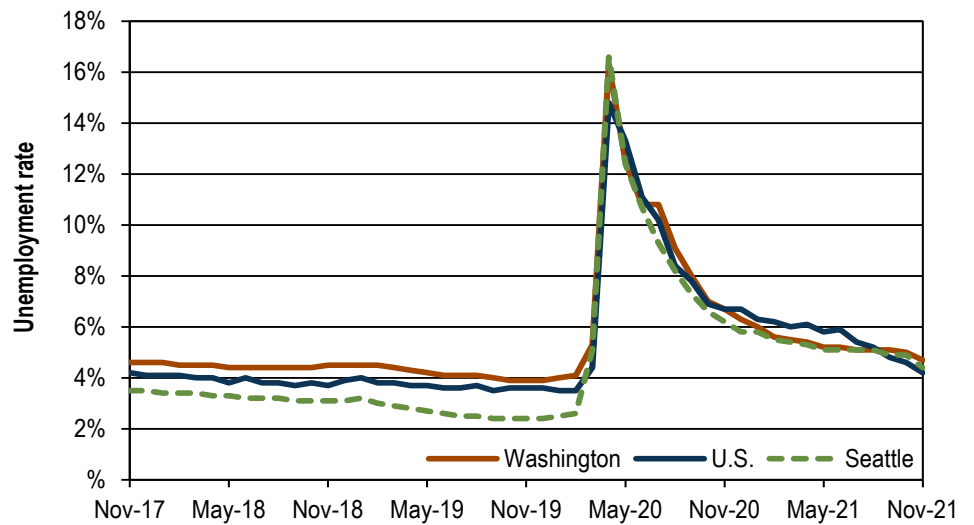
According to BLS estimates, the number of unemployed people fell by 13,500 in November 2021 compared to October 2021. At the same time, the number of employed people rose by an estimated 15,200. Overall, this amounted to an increase of 1,700 people in the labor force.

The preliminary November 2021 unemployment rate is 2.0 percentage points lower than the November 2020 rate of 6.7 percent.

Unemployment rates, seasonally adjusted

U.S., Washington and Seattle, November 2017 through November 2021

Source: Employment Security Department/DATA; U.S. Bureau of Labor Statistics, Local Area Unemployment Statistics



November 2021 preliminary unemployment rates:

U.S. (preliminary) 4.2%
 Washington (preliminary) 4.7%
 Seattle area (preliminary) 4.4%

Employment change, seasonally adjusted

Based on BLS estimates, Washington state nonfarm employment increased by 12,800 jobs from October 2021 to November 2021.

Recent employment change:

September 2021: up 18,800 jobs (revised)

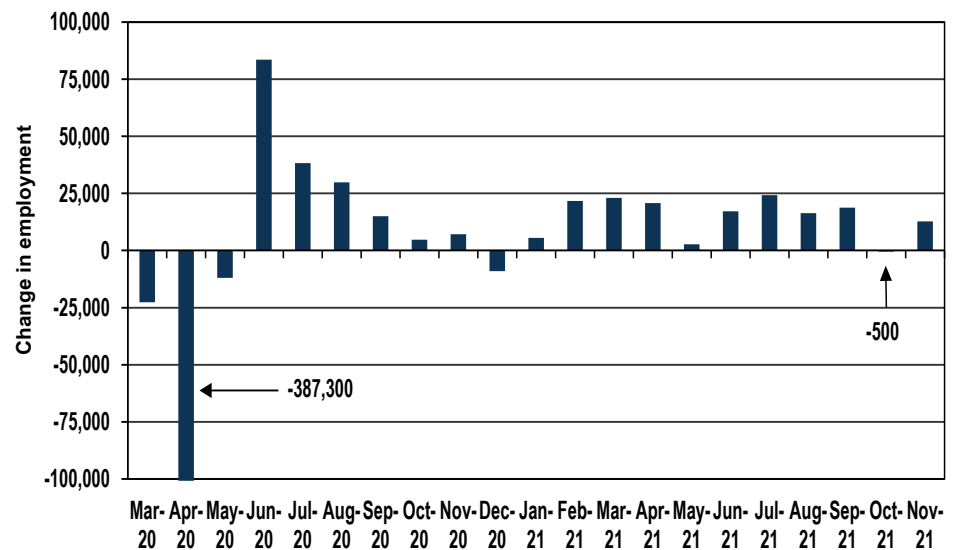
October 2021: down 500 jobs (revised)

November 2021: up 12,800 jobs (preliminary)

Monthly employment change, seasonally adjusted

Washington state, March 2020 through November 2021

Source: Employment Security Department/DATA; U.S. Bureau of Labor Statistics, Current Employment Statistics



Employment and unemployment, seasonally adjusted

February 2020

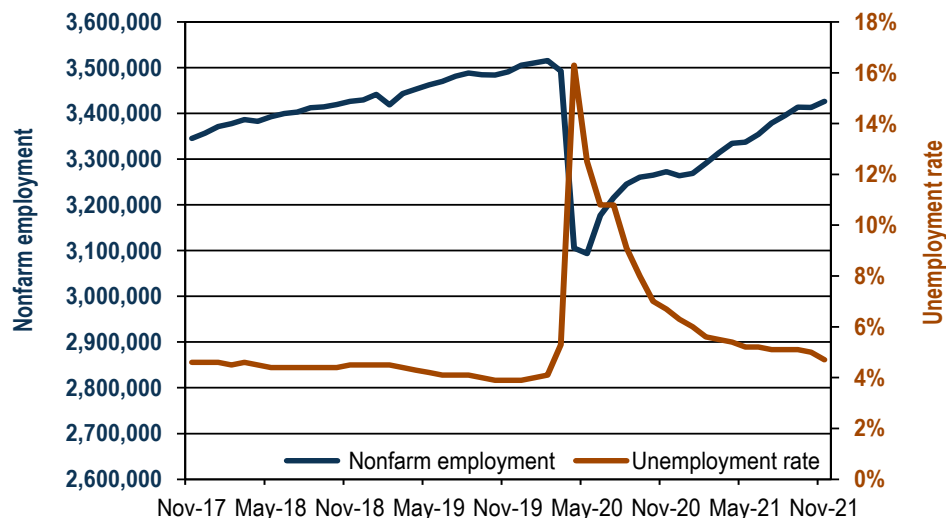
(Start of 2020 employment recession in Washington)

Nonfarm employment: 3,515,500
Unemployment rate: 4.1%

November 2021 (preliminary)

Nonfarm employment: 3,426,100
Unemployment rate: 4.7%

Nonfarm employment and unemployment rate, seasonally adjusted
Washington state, November 2017 through November 2021
Source: Employment Security Department/DATA; U.S. Bureau of Labor Statistics, Current Employment Statistics, Local Area Unemployment Statistics



Workers and businesses affected by COVID-19

Employment Security's **COVID-19 online information page** covers topics for businesses and workers impacted by COVID-19. Topics include:

- Subscribing for updates
- Frequently asked questions
- Workers Q&A
- Business Q&A
- CARES ACT
- COVID-19 rulemaking
- COVID-19 resources
- Action alerts and updates

We are all in this together. The COVID-19 pandemic has created an unprecedented demand for services, but we are building capacity, updating technology, and we thank you for your patience while we work to serve you better.

Did you know that you can subscribe for email updates on a number of Employment Security Department topics all at once? Go to esd.wa.gov/labormarketinfo and select the email icon at the top of the page.



Enter your email address and subscribe by checking the boxes for topics such as:

COVID-19
Labor market information
News releases
Employer news and resources
Paid Family and Medical Leave
Employer information
SharedWork program
WorkSource system
Unemployment insurance
Training

Many more to come, so sign up today for your email updates!

U-6 unemployment rate

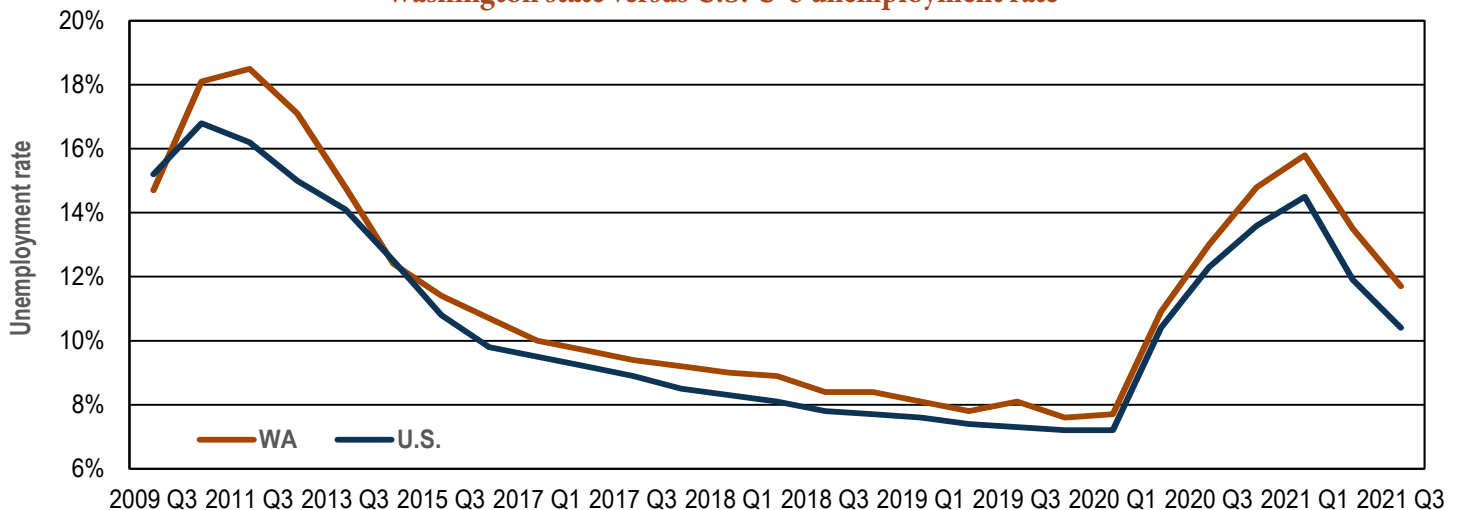
U-6: Broader unemployment measure decreased in the four-quarter period ending third quarter 2021

The U.S. Bureau of Labor Statistics (BLS) recently updated its “alternative measures of labor underutilization” for states to include annual averages for 2021. One such alternative measure is the U-6 rate, which considers not only the unemployed population in the official “U-3” unemployment rate, but also marginally attached workers and

those employed part time for economic reasons. The U-6 rate is defined by BLS as the “total unemployed, plus all marginally attached workers, plus total employed part time for economic reasons, as a percent of the civilian labor force plus all marginally attached workers.” This U-6 measure measures the “unemployed, underemployed, and those who are not looking but who want a job.”

The U-6 unemployment rate for the fourth quarter 2020 through the third quarter 2021 for Washington state was 11.7 percent. This was lower compared to the 13.5 percent U-6 unemployment rate for the third quarter 2020 through the second quarter 2021. The U.S. U-6 unemployment rate for the fourth quarter 2020 through the third quarter 2021 was 10.4 percent.

Alternate measures of labor underutilization, four-quarter moving average
Washington state versus U.S. U-6 unemployment rate



Year	WA/U.S.	Q1	Q2	Q3	Annual average
2021	WA	15.8%	13.5%	11.7%	
	U.S.	14.5%	11.9%	10.4%	
2020	WA	8.1%	10.9%	13.0%	14.8%
	U.S.	7.7%	10.4%	12.3%	13.6%
2019	WA	8.1%	7.8%	8.1%	7.6%
	U.S.	7.6%	7.4%	7.3%	7.2%
2018	WA	9.0%	8.9%	8.4%	8.4%
	U.S.	8.3%	8.1%	7.8%	7.7%
2017	WA	10.0%	9.7%	9.4%	9.2%
	U.S.	9.5%	9.2%	8.9%	8.5%
2016	WA	10.9%	10.7%	10.7%	10.3%
	U.S.	10.1%	9.9%	9.8%	9.6%
2015	WA	12.0%	11.7%	11.4%	11.0%
	U.S.	11.6%	11.3%	10.8%	10.4%

Source: Bureau of Labor Statistics: <https://www.bls.gov/lau/stalt.htm>.

Industry employment in Washington, seasonally adjusted

One-month employment change by industry

Based on a BLS survey of businesses and governments, Washington gained an estimated 12,800 jobs during the month, on a seasonally adjusted basis:

- Overall, employment increased in eight major industries and decreased in five in November.
- Private sector employment is estimated to have increased by 8,100 and government employment increased by 4,700.
- Employment in leisure and hospitality increased by 4,800 over the month, led by 3,800 jobs added in food services and drinking places.
- Employment in construction rose by 1,800 overall, with 2,900 jobs added by specialty trade contractors.
- Retail trade employment increased by 1,500 overall, led by 1,500 jobs gained in food and beverage stores.
- Manufacturing employment rose by 1,400 overall, with 1,300 jobs gained in aerospace product and parts manufacturing.
- The number of jobs in transportation, warehousing and utilities decreased by 800 overall, with 600 jobs lost in truck transportation.

Estimated one-month employment change by industry, seasonally adjusted
Washington state, October 2021 to November 2021

Source: Employment Security Department/DATA; U.S. Bureau of Labor Statistics, Current Employment Statistics

Total nonfarm	12,800
Leisure and hospitality	4,800
Government	4,700
Information	1,900
Construction	1,800
Retail trade	1,500
Manufacturing	1,400
Mining and logging	100
Professional and business services	100
Financial activities	-400
Education and health services	-700
Other services	-700
Transportation, warehousing and utilities	-800
Wholesale trade	-900

As we navigate the COVID-19 developments in Washington state and beyond, we know Washington state businesses, nonprofits, city and county municipalities, educational institutions, as well as economic and workforce development professionals, are looking for sound data about the short and long term economic and workforce impacts to their individual businesses, industries and regions.

If you have specific questions regarding labor market information, please send your emails to data@esd.wa.gov.

Industry employment in Washington, not seasonally adjusted

Change by industry over the year

Based on a BLS survey of businesses and governments, Washington gained an estimated 147,200 jobs from November 2020 through November 2021.

- Overall, eleven major industries expanded, one contracted and one remained unchanged.
- Private sector employment rose 4.6 percent, up an estimated 127,100 jobs.
- Public sector employment rose 3.7 percent, up an estimated 20,100 jobs.
- Employment in leisure and hospitality is up by 50,800, with food services and drinking places adding 36,800 jobs.
- Professional and business services employment increased by 21,300, with 8,400 jobs added in professional, scientific and technical services.
- Education and health services employment increased by 9,300, with 6,500 jobs added in education services.
- Construction employment rose 9,200 overall, with 5,800 jobs added by specialty trade contractors.
- Employment in manufacturing is up 5,500, led by an increase of 1,900 in food manufacturing.

Estimated employment change by industry over the year, not seasonally adjusted
Washington state, November 2020 through November 2021

Source: Employment Security Department/DATA; U.S. Bureau of Labor Statistics, Current Employment Statistics

Total nonfarm	147,200
Leisure and hospitality	50,800
Professional and business services	21,300
Government	20,100
Information	13,200
Education and health services	9,300
Construction	9,200
Transportation, warehousing and utilities	6,700
Financial activities	5,900
Other services	4,700
Manufacturing	5,500
Wholesale trade	2,100
Retail trade	-1,600
Mining and logging	0

Seasonally adjusted employment

Seasonally adjusted numbers account for normal seasonal patterns that occur year after year, such as strong seasonal hiring in retail trade around the holidays. Taking into account normal seasonal variations makes it possible to see unusual changes in employment levels.

Normal seasonal change is the expected monthly change in employment based on history.

Estimated change is the employment change over the month based on BLS survey data.

Seasonally adjusted change is change in employment accounting for normal seasonal patterns.

Normal seasonal change, estimated change and seasonally adjusted change
Washington state, November 2021

Source: Employment Security Department/DATA; U.S. Bureau of Labor Statistics, Current Employment Statistics

	Normal seasonal change	Estimated change	Seasonally adjusted change
Total nonfarm	-4,000	8,800	12,800
Retail trade	5,000	6,500	1,500
Transportation, warehousing and utilities	1,900	1,100	-800
Professional and business services	300	400	100
Education and health services	100	-600	-700
Mining and logging	-100	0	100
Information	-200	1,700	1,900
Wholesale trade	-600	-1,500	-900
Financial activities	-900	-1,300	-400
Other services	-1,000	-1,700	-700
Manufacturing	-1,200	200	1,400
Government	-1,600	3,100	4,700
Leisure and hospitality	-2,600	2,200	4,800
Construction	-3,100	-1,300	1,800

Based on historical patterns, Washington employment typically decreases by 4,000 from October to November. This year the state gained an estimated 8,800 jobs, amounting to a seasonally adjusted increase of 12,800 jobs.

- Employment in retail trade normally rises by 5,000. It is estimated to have increased by 6,500 this November so it increased by 1,500 on a seasonally adjusted basis.
- The employment increase on a seasonally adjusted basis was 100 in professional and business services in November. The normal seasonal decrease is 300. It is estimated to have increased this November by 400.
- Typically, manufacturing employment decreases by 1,200 in November. On a seasonally adjusted basis, manufacturing employment increased by 1,400 as the estimated increase was 200.
- The normal seasonal loss in leisure and hospitality employment is 2,600 in November. The estimated gain was 2,200, so employment increased by 4,800 on a seasonally adjusted basis.
- The estimated employment decrease in construction was 1,300. The normal seasonal decrease is 3,100, so on a seasonally adjusted basis, construction employment increased by 1,800.

Media inquiries and contact information

Due to the high volume of requests for information, please send your emails to media@esd.wa.gov so that we can forward your requests to the appropriate staff.

For labor market information questions, please send your emails to data@esd.wa.gov.

Statewide labor economist:

Paul Turek, Ph.D.
Paul.turek@esd.wa.gov
 360-706-3044

Regional labor economists:

Scott Bailey
scott.bailey@esd.wa.gov
 360-810-0048

Don Meseck
Don.meseck@esd.wa.gov
 509-574-0176

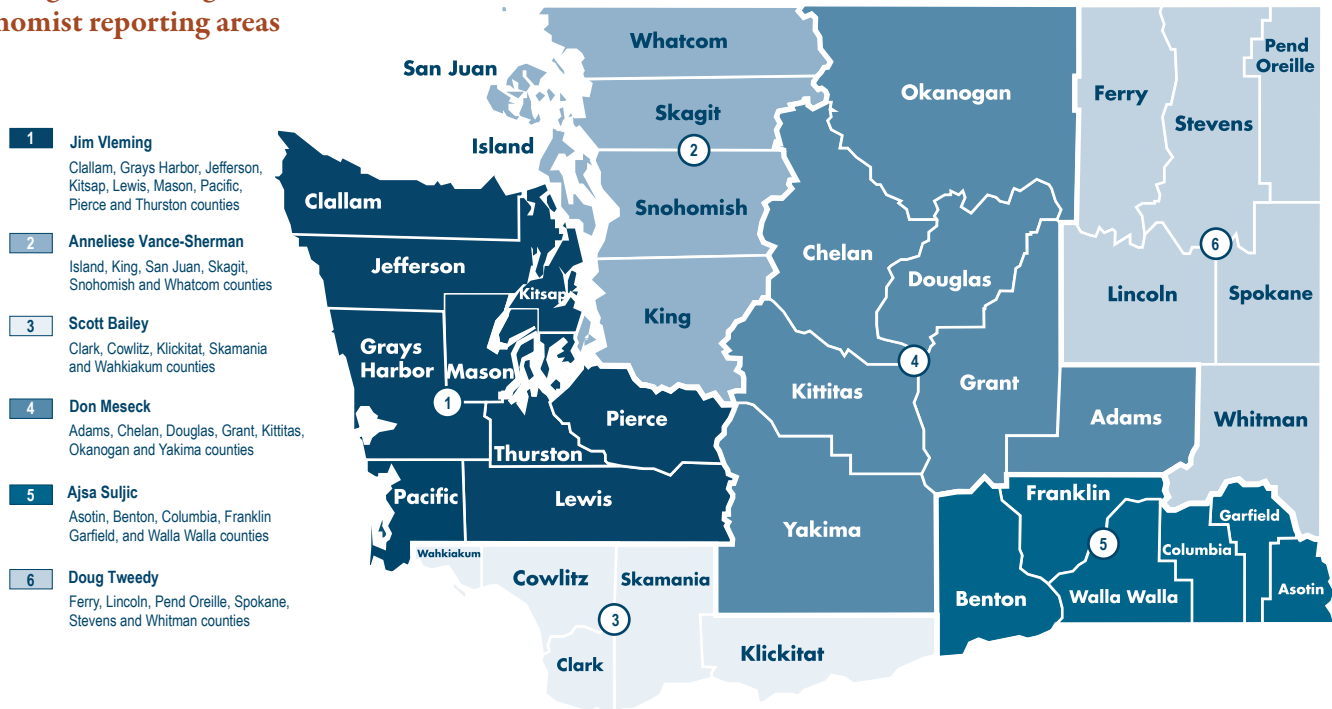
Ajsa Suljic
Ajsa.suljic@esd.wa.gov
 509-734-5928

Doug Tweedy
dtweedy@esd.wa.gov
 509-434-5278

Anneliese Vance-Sherman, Ph.D.
Anneliese.vancesherman@esd.wa.gov
 425-258-6315

Jim Vleming
Jim.vleming@esd.wa.gov
 360-819-3427

Washington state regional labor economist reporting areas



The county level information will be available at 10 a.m., December 21, 2021.

The publication schedule for 2021 is posted at: <https://esd.wa.gov/labormarketinfo/monthly-employment-report>.

Employment Security Department is an equal opportunity employer/programs. Auxiliary aids and services are available upon request to individuals with disabilities. Language assistance services for limited English proficient individuals are available free of charge. Washington Relay Service: 711.

This workforce product was funded by a grant awarded by the U.S. Department of Labor's Employment and Training Administration. The product was created by the recipient and does not necessarily reflect the official position of the U.S. Department of Labor. The Department of Labor makes no guarantees, warranties, or assurances of any kind, expressed or implied, with respect to such information, including any information on linked sites and including, but not limited to, accuracy of the information or its completeness, timeliness, usefulness, adequacy, continued availability, or ownership. This product is copyrighted by the institution that created it. Internal use by an organization and/or personal use by an individual for non-commercial purposes is permissible. All other uses require the prior authorization of the copyright owner.